

This update has been prepared for people with an interest in the delivery of the landmark \$315 million Houghton Highway Duplication Project, which involves construction of a new 2.7km road, cycle and pedestrian bridge between Brisbane and Redcliffe. The project is being undertaken by Main Roads and its construction contractor, the Hull Albem Joint Venture, and is scheduled for completion in 2011 (weather permitting).

Current works

- Construction of the new Houghton Highway bridge is continuing off Brighton, and advancing further north across Bramble Bay. Seventeen of the bridge's 78 spans are now standing, and a further six are under construction. Concrete barriers are being progressively installed on the erected spans.
- Construction of the new Pine River Fishing Platform is underway in the middle of Bramble Bay, between Brighton and Clontarf. The platform is being built next to the main channel into the Pine River, on the seaward side of the new Houghton Highway bridge. It will be connected to the bridge by a wheelchair-accessible walkway.
- Construction of the northern abutment of the new bridge is in progress at Clontarf Point.



ABOVE: CONSTRUCTION OF THE NEW HOUGHTON HIGHWAY BRIDGE IN PROGRESS OFF THE BRIGHTON FORESHORE. THE ERECTED SPANS OF THE BRIDGE ON THE LEFT OF THE PICTURE ARE BEING FITTED WITH CONCRETE BARRIERS, WHILE CONSTRUCTION OF NEW SPANS CONTINUES TO THE RIGHT OF THE FRAME.

- Roadworks are continuing on the southern approaches to the Houghton Highway at Brighton. These include road widening and construction of new pedestrian cycle paths along Deagon Deviation, and reconstruction of the Hornibrook Highway between Deagon Deviation and Twenty-fifth Avenue. Roadworks are also now underway on the northern approaches to the Houghton Highway, along Elizabeth Avenue and Hornibrook Esplanade at Clontarf.
- New pedestrian / cycle underpasses are under construction at both ends of the Houghton Highway. The underpasses will run beneath both Houghton Highway bridges.

- Rock and earth fill is continuing to be deposited and compacted along the road embankment being built behind the new seawall at the Clontarf end of the Houghton Highway. Construction of the new seawall at the Brighton end of the highway is still underway.

Traffic changes and other construction impacts

- Traffic is being redirected around roadworks on Elizabeth Avenue at Clontarf, between Hornibrook Esplanade and Angus Street. At least one lane in each direction will remain open at all times while these roadworks are in progress.

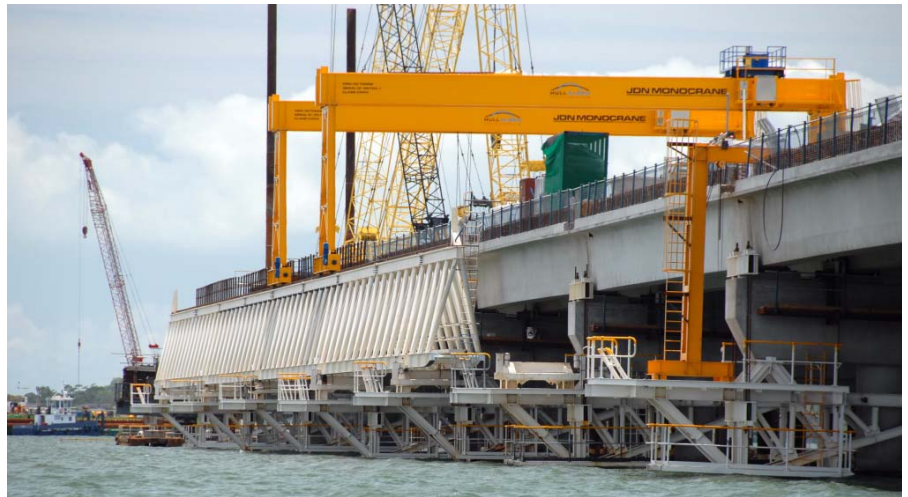
The Elizabeth Avenue entries to the Clontarf Supa IGA shopping centre and adjacent business complex have been temporarily closed to enable the roadworks to be carried out. These properties are accessible from alternative entries on Hornibrook Esplanade and Angus Street. Signage has been erected to direct motorists to these entries. The Elizabeth Avenue entries to the properties should be reopened by late April 2009 (weather permitting).

- Traffic is being redirected around roadworks on the Hornibrook Highway at Brighton, between Deagon Deviation and Twenty-fifth Avenue. Temporary partial traffic lane closures will occur in this area from time-to-time, and short delays should be expected.
- Traffic will be redirected from time-to-time around roadworks on Deagon Deviation at Brighton, and on Hornibrook Esplanade at Clontarf. At least one lane in each direction will remain open at all times while these roadworks are in progress. Two lanes will remain open inbound during morning peak periods and two lanes outbound during afternoon peak periods.
- Please take care when travelling around the roadworks. Speed limits may be reduced in some areas. All traffic changes will be signed, and traffic controllers will be in place to direct motorists, pedestrians and cyclists as required. Temporary detour paths around roadworks will also be provided for pedestrians and cyclists as required.
- Oversize bridge girders will be delivered to the construction depot at Decker Park, Brighton, approximately twice a week between 2am and 5.30am until mid 2010. These deliveries will block the intersection of the Deagon Deviation and Houghton Highway at Brighton for five minute periods. Traffic control will be provided by escorting police.
- Access for swimmers, boats and personal watercraft is restricted around all Houghton Highway construction sites in Bramble Bay. From late March / early April 2009, bridge construction works will be in progress in and over the main navigation channel into the Pine River. Marine traffic navigating the channel will be required to pass through / under these construction works. Changes to speed / navigation conditions in the area will be signed. Notices to Mariners advising of major changes to local boating access and speed / navigation conditions are issued by the Harbourmaster, and are posted on the Maritime Safety Queensland website – www.msq.qld.gov.au.
- Sections of Decker Park at Brighton and the foreshore parkland at Clontarf Point have been fenced, and are not accessible to the community during construction. Traffic control will be provided where vehicles are required to cross pedestrian footpaths in these areas from time-to-time.
- Pedestrian and cycle access has been closed beneath the Brighton and Clontarf ends of the existing Houghton Highway bridge during construction. Signed detours are provided.

- Construction involves the use of heavy machinery/tools (e.g. pile driving hammers, excavators and trucks) which may cause increased noise, dust and vibration at times around work sites. The project team will conduct regular monitoring of these impacts to ensure they are within prescribed limits.

Upcoming works

- Construction of spans 18 – 24 of the new Houghton Highway bridge will continue throughout March 2009. Concrete barriers will continue to be installed on the erected spans of the bridge.
- Construction of the northern abutment of the new bridge will continue at Clontarf Point. Work may also soon start on the construction of the 78th span of the bridge that will connect with the northern abutment. Building these sections of the bridge will assist with the construction of the Houghton Highway's northern approach roads.
- Roadworks on the new southern approaches to the Houghton Highway bridges will continue on Deagon Deviation and the Hornibrook Highway at Brighton. Roadworks on the new northern approaches will continue on Elizabeth Avenue at Clontarf.
- Construction of new seawalls and cycle / pedestrian underpasses will continue at both ends of the Houghton Highway.
- Construction of the new Pine River Fishing Platform will continue in Bramble Bay.



RIGHT: THESE MASSIVE ORANGE GANTRY CRANES LIFT THE 80-TONNE , 35M LONG PRECAST CONCRETE GIRDERS OF THE NEW BRIDGE INTO PLACE ON ITS SUPPORT PIERS.

More information

- General enquiries..... Phone 1800 626 976 during business hours (toll free in Australia)
Email houghtonhighway@mainroads.qld.gov.au
- Project plans/information www.mainroads.qld.gov.au (search projects for Houghton Highway)
- Urgent or after hours enquiries.... Phone the Project Manager on 0418 785 370
- Site office..... Phone (07) 3269 0109 during business hours

Please take care when travelling through the construction site. Observe any changed speed zones and be aware of the workforce delivering this project. We thank you for your interest in the project.

CLAYTON SMITH
PROJECT MANAGER, HULL ALBEM JOINT VENTURE