



Direct Sunshine Coast Rail Line

Mountain Creek station

Mountain Creek is home to low-medium density residential dwellings, the Mooloolaba TAFE campus and schools. Mountain Creek is located west of Mooloolaba Beach, which is a popular commercial and tourist destination on the Sunshine Coast. Mountain Creek station is proposed to service the local residential community and offer connections to key destinations for tourism and education.

Improving active transport and bus-rail interchange between the Mooloolaba area and Mountain Creek station is a significant opportunity for the Direct Sunshine Coast Rail Line project.

Mountain Creek station is proposed to be located on the west of the Sunshine Motorway, with east/west connections to enable access to from Mooloolaba, Mountain Creek and Buderim.

The following features are proposed for Mountain Creek station:

- Accessible station with two tracks, serviced by side platforms. These platforms will be future-proofed to accommodate 9-car trains. Side platforms assist to minimise the station footprint at this location.
- The park 'n' ride is anticipated to accommodate lower volumes of users due to its local catchment and active transport connections. The park 'n' ride is proposed to be a multi-storey carpark with access from both Syd Lingard Drive (north of the station) and Karawatha Drive (south of the station). Planning for this park 'n' ride is still underway, with ultimate numbers to be determined with transport modelling.
- Bus interchange bays and kiss 'n' ride (drop off zone)
- Station facilities including ticket office, public toilets, end-of-trip facilities (cycle and scooter storage), CCTV and lighting.
- The station is proposed to have an active transport connection to Amarina Avenue, Mooloolaba. The form of this connection (underpass or overpass) is being investigated.



TMR undertook consultation on the Direct Sunshine Coast Rail Line stations in mid-2023. The community was encouraged to provide feedback on the alignment, stations and active transport.

What you told us about Mountain Creek station

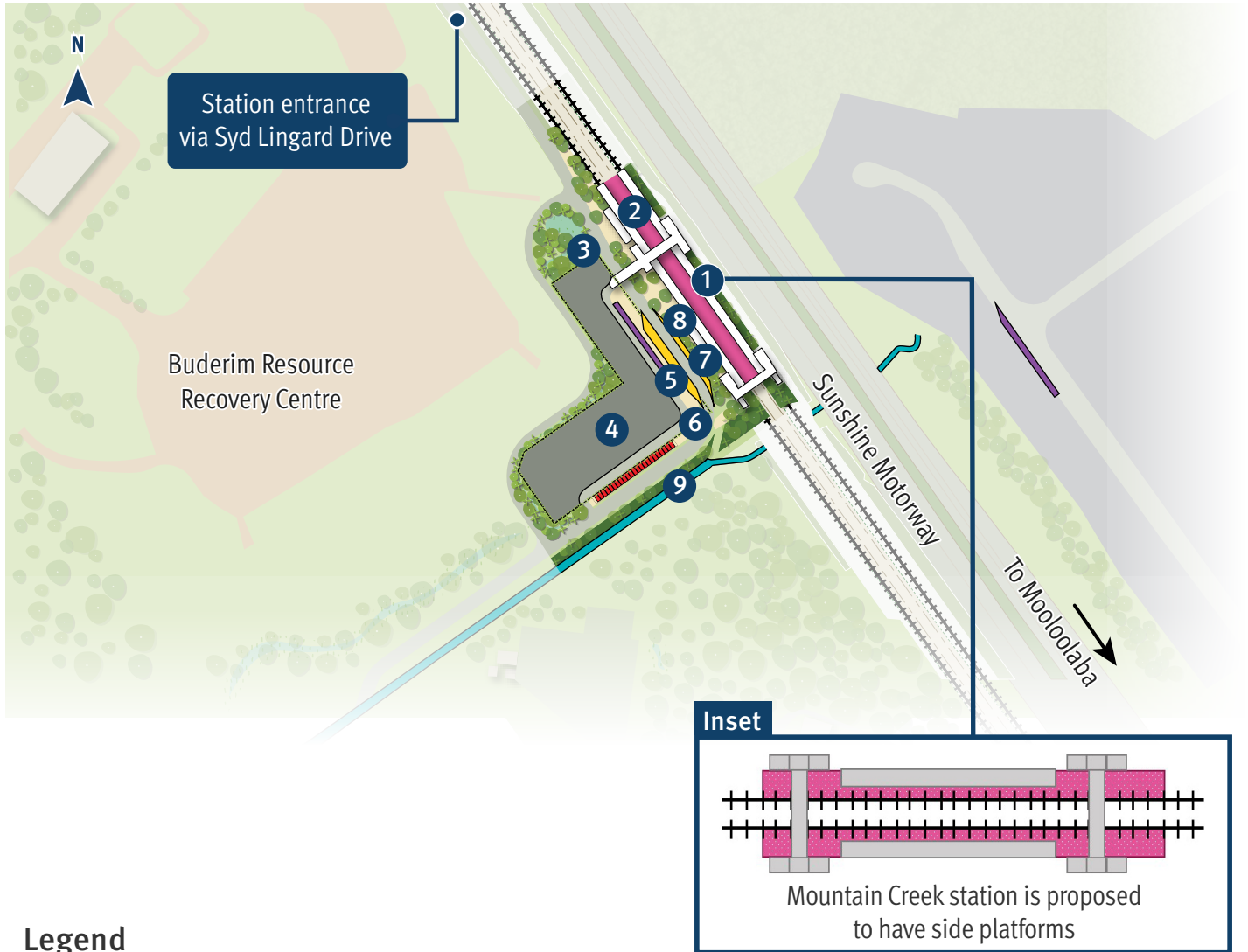
- Park ‘n’ ride is needed
- Accessible design for disability access
- Importance of connection to buses
- Good active transport connections essential
- Feedback about alternative station locations
- Feedback about architectural design elements, materials, lighting and signage
- Importance of storage for bicycles and scooters
- Toilets required due to distance from other facilities.

How this is considered in the business case design

- A park ‘n’ ride is included in the design. It is proposed to be positioned west of the station, with access from Syd Lingard Drive and Lady Musgrave Drive. Planning for this park ‘n’ ride is still underway. Considerations include design of the facility to discourage direct connection between Syd Lingard Drive and Lady Musgrave Drive and improving connectivity to Mooloolaba.
- All new and upgraded stations will be accessible for all customers.
- Connecting bus services is a key consideration of planning for the rail project, with modelling and service planning underway. This will include connections to Mooloolaba and University of the Sunshine Coast.

- Active transport connections are being planned along the full 37km corridor to ensure people can walk and ride to stations and to other destinations. At Mountain Creek station, key considerations will be given to new connections to the suburbs east of the Sunshine Motorway and connecting to existing facilities which service the high school and TAFE.
- Station placement west of the Sunshine Motorway is driven by constraint points north and south (at the Mooloolah-River Interchange and Buderim-Mooloolaba Road), rail geometry, and reducing environmental and property impacts. Final positioning of this station on the west of the motorway will be confirmed as design progresses and more detailed survey and environmental investigations are undertaken.
- All stations will have cycle and scooter storage.
- Lighting will be provided at all stations for safety. The nearby environment and residents will be considered when determining the positioning and type of lighting. This will be confirmed in later phases of the project.
- The business case design for stations includes concept designs for platform configuration and the station building. Detailed design, including more specific details about station facilities, will be undertaken in future phases of the project. Community feedback received during the business case phase will be considered in detailed design.

Mountain Creek station map (updated concept layout)



Legend

- ① Station platforms (street level station, side platforms)
– see inset
- ② Dual track
- ③ Landscaping
- ④ Park 'n' ride (multi-storey)
- ⑤ Kiss 'n' ride
- ⑥ Disability parking bays and station staff parking
- ⑦ Bus bays
- ⑧ Cycle storage
- ⑨ Existing active transport underpass. Options are being investigated for pedestrian and bicycle connection to Amarina Avenue

All double-side platform stations to include lifts and stairs between platforms.

Mountain Creek station access and features

Getting to and from stations

In addition to connections with the Sunshine Coast Public Transport project, the Direct Sunshine Coast Rail Line project includes upgrades to the bus network to ensure communities along the route have efficient connections to stations.

In line with the Southern Sunshine Coast Public Transport Strategy, we're planning to introduce new routes between stations, key destinations, and surrounding areas. This will improve travel right across the region.



Scan the QR code to view all DSC Rail Line station concept layouts and a map of proposed corridor refinements.



Accessibility

All stations will be accessible to everyone in our community.



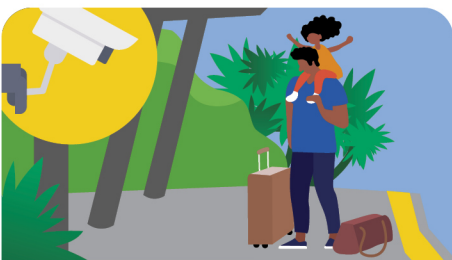
Active transport

To support active transport options, stations will feature facilities and infrastructure to accommodate bikes and other micro-mobility devices.



Passenger comfort

Seating, shelters and nearby water refill points will ensure comfortable journey experiences, with toilets provided at major interchange stations.



Safety

In accordance with Crime Prevention Through Environmental Design (CPTED) principles, stations will include CCTV cameras, lighting and help points.



Ticketing and information

Customer information will be provided via display screens, timetables and hearing loops, with ticketing facilities also included.

Contact us

-  1800 407 533 (8.30am to 4.30pm)
-  scpublictransport@tmr.qld.gov.au
-  Sunshine Coast Public Transport
Department of Transport and Main Roads
PO Box 1600
Maroochydore QLD 4558