



Direct Sunshine Coast Rail Line

Caloundra station

Caloundra is a regionally significant destination, with multiple beaches and a diverse mix of commercial, community, transportation and residential uses. Caloundra station is proposed to act as a gateway to the coastal areas of the Sunshine Coast. Golden, Bulcock and Kings beaches are the closest and would be accessed via transfer at the station to other public and active transport.

Caloundra station is proposed to be located south of Caloundra Road to improve multi-modal connectivity and meet the Public Safety Area requirements for the Caloundra Aerodrome. This location also enables a closer link to the park 'n' ride and bus interchange.

At this location, the rail corridor and station are proposed to be elevated to enable the crossing of Caloundra Road. As the station is elevated, it is expected to have views of the ocean – a fitting entry statement for people visiting the Sunshine Coast.

The following features are proposed to be included in the design for Caloundra station.

- Accessible station with two tracks and an island platform (platform positioned between the two tracks). These platforms will be future-proofed to accommodate 9-car trains.
- As this station is an elevated station, the vertical transport between the ground and platform levels has been designed to include escalators, stairs and lifts.
- A park 'n' ride is proposed to be located on the eastern side of the rail corridor at ground level. Transport modelling demonstrates a need for a large park 'n' ride at this location.
- A bus interchange and kiss 'n' ride are proposed to be located beneath the station. This will enable easy transfer between transport modes.
- Station facilities including ticket office, public toilets, end-of-trip facilities (cycle and scooter storage), CCTV and lighting.
- Active transport connections are proposed to include a bridge over Pelican Waters Boulevard and Caloundra Road to improve station access, as well as new and upgraded active transport facilities to connect Pelican Waters Boulevard and Caloundra Road to the station.



TMR undertook consultation on the Direct Sunshine Coast Rail Line stations in mid-2023. The community was encouraged to provide feedback on the alignment, stations and active transport.

What you told us about Caloundra station

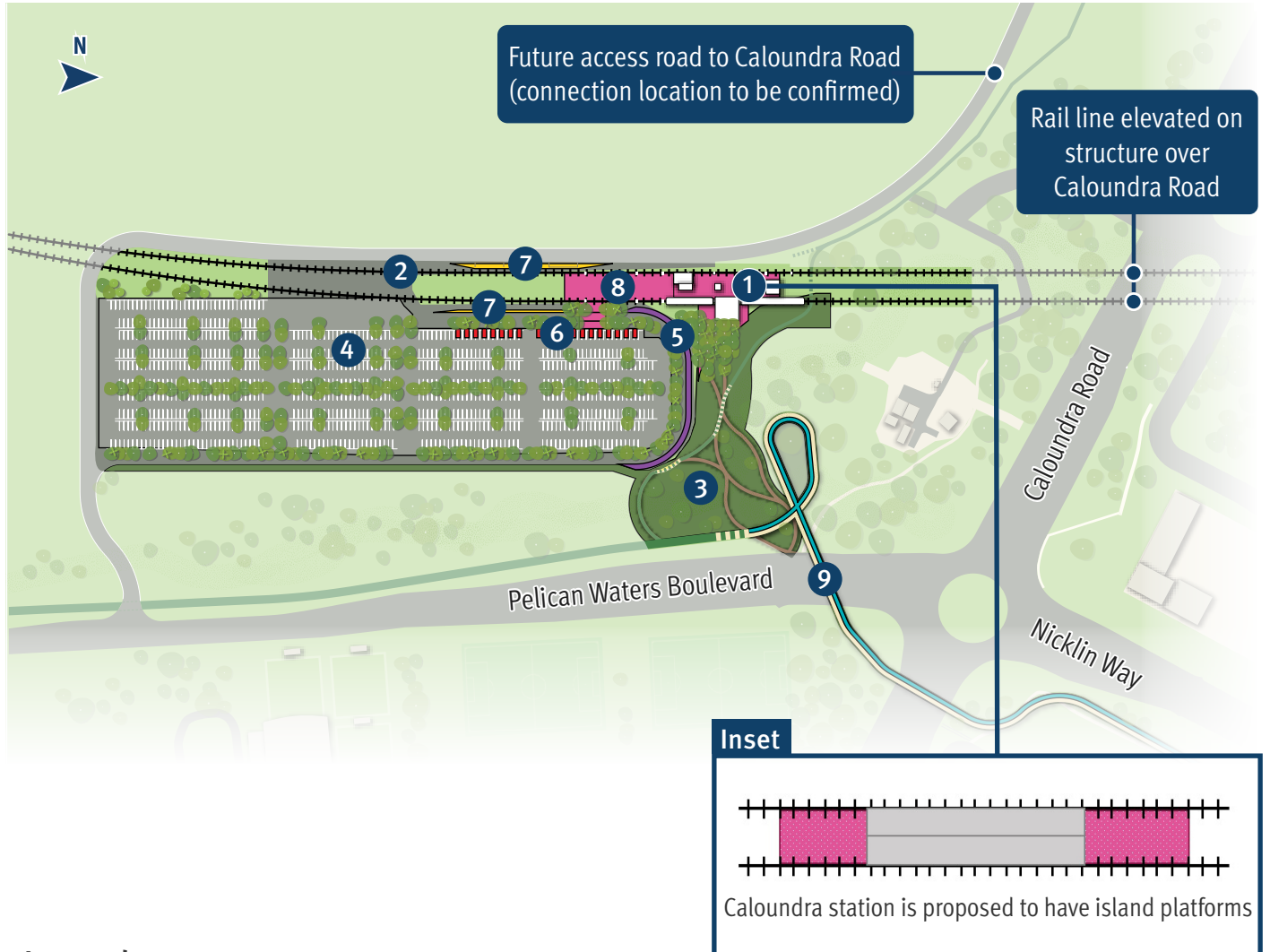
- Large park ‘n’ ride needed with mixed feedback regarding a multi-storey facility
- A desire for commercial outlets at the station
- Feedback about platform and rail line configuration
- Good active transport connections essential (consider safety on Caloundra Road, Nicklin Way and Pelican Waters Boulevard) – mixed feedback regarding underpasses and overpasses
- Mixed feedback regarding proposed location over Caloundra Road
- Importance of good visual design and consideration of nearby environment
- Importance of accessible design for disability access
- Importance of connection to buses
- Importance of storage for bicycles and scooters
- Concerns about flooding from the nearby creek

How this is considered in the business case design

- The park ‘n’ ride is proposed to be located east of the station. The facility is proposed to be a single-storey street level car park. This is primarily due to the complexities of constructing a structure on potentially contaminated land (the site was previously used for waste) and the higher cost of a multi-storey car park. This will be investigated further as geotechnical and environmental investigations proceed and design develops.
- Opportunities to include recreational and commercial facilities have been acknowledged within the business case and will be considered in the detailed design stage.
- Caloundra station has been relocated south of Caloundra Road to improve multi-modal connectivity and meet the Public Safety Area requirements for the Caloundra Aerodrome.

- Bus network planning is underway. Buses are proposed to collect and drop off passengers at a bus interchange underneath the elevated station.
- All new and upgraded stations will be accessible for all customers.
- Active transport connections are being planned along the full 37km corridor to ensure people can walk and ride to stations and to other destinations. An active transport overpass is proposed to connect people across the Caloundra Road/Nicklin Way roundabout, and new facilities are proposed along existing roads to support safe access for surrounding areas.
- All stations will have storage for cycling and scooters.
- Elevating the rail line over Caloundra Road reduces the risk of the track or station flooding. Flood modelling is underway and will inform the design of drainage to reduce flooding of any new facilities and surrounding existing areas.
- The business case design for stations includes concept designs for platform configuration and the station building. Detailed design, including more specific details about station facilities and design treatments, will be undertaken in future phases of the project. Community feedback received during the business case phase will be considered in detailed design.
- Transport modelling continues to inform the business case. This modelling will include assessments of the surrounding local road networks. Transport and traffic modelling will continue to inform the design as it develops in future stages and may result in some local network upgrades or changes around the stations.

Caloundra station map (updated concept layout)



Legend

- ① Station platforms (elevated station, island platforms)
– see inset
- ② Dual track
- ③ Landscaping
- ④ Park 'n' ride (street level)
- ⑤ Kiss 'n' ride
- ⑥ Disability parking bays and station staff parking
- ⑦ Bus bays
- ⑧ Cycle storage
- ⑨ Pedestrian and bicycle (active transport) connection/overpass

All elevated (2 storey) stations to include lifts and stairs.

Caloundra station access and features

Getting to and from stations

In addition to connections with the Sunshine Coast Public Transport project, the Direct Sunshine Coast Rail Line project includes upgrades to the bus network to ensure communities along the route have efficient connections to stations.

In line with the Southern Sunshine Coast Public Transport Strategy, we're planning to introduce new routes between stations, key destinations, and surrounding areas. This will improve travel right across the region.



Scan the QR code to view all DSC Rail Line station concept layouts and a map of proposed corridor refinements.



Accessibility

All stations will be accessible to everyone in our community.



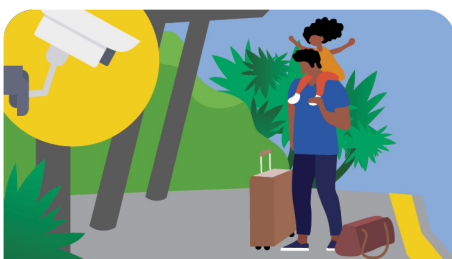
Active transport

To support active transport options, stations will feature facilities and infrastructure to accommodate bikes and other micro-mobility devices.



Passenger comfort

Seating, shelters and nearby water refill points will ensure comfortable journey experiences, with toilets provided at major interchange stations.



Safety

In accordance with Crime Prevention Through Environmental Design (CPTED) principles, stations will include CCTV cameras, lighting and help points.



Ticketing and information

Customer information will be provided via display screens, timetables and hearing loops, with ticketing facilities also included.

Contact us

-  1800 407 533 (8.30am to 4.30pm)
-  scpublictransport@tmr.qld.gov.au
-  Sunshine Coast Public Transport
Department of Transport and Main Roads
PO Box 1600
Maroochydore QLD 4558