

Centenary Motorway (Ellen Grove – Toowong), Centenary Bridge, duplicate bridge

Known as Centenary Bridge Upgrade
Community Consultation Summary Report

October 2022



Copyright

This publication is protected by the *Copyright Act 1968*.

© The State of Queensland, October 2022.

Compiled and published by the Queensland Department of Transport and Main Roads.

Licence



The material in this work is licensed by the Department of Transport and Main Roads under a Creative Commons Attribution 4.0 International licence (CC BY 4.0), with the exception of:

- the Queensland Coat of Arms
- the Australian Government Coat of Arms
- this department's logo
- any third party material
- any material protected by a trademark, and
- any images and/or photographs.

More information on the CC BY licence is set out as follows:

- Creative Commons website—www.creativecommons.org
- Attribution 4.0 international (CC BY 4.0)—<https://creativecommons.org/licenses/by/4.0/>

Third party copyright

Third party material that is not licensed under a Creative Commons licence is referenced within this document:

- all photographs, graphics, images and maps

Wherever a third party holds copyright in this material, the copyright remains with that party. Their permission may be required to use the material. Please contact them directly.

Attribution

The CC BY licence is a standard form licence agreement that allows you to copy and redistribute the material in any medium or format, as well as remix, transform, and build upon the material, on the condition that you provide a link to the licence, you indicate if changes were made, and you attribute the material as follows:

© State of Queensland (Department of Transport and Main Roads), *Centenary Motorway (Ellen Grove – Toowong), Centenary Bridge, duplicate bridge. Known as Centenary Bridge Upgrade, Community Consultation Summary Report, October 2022*, is licensed under CC BY 4.0

Enquiries about the use of any material in this publication can be sent to the department at: copyright@tmr.qld.gov.au

Disclaimer

While every care has been taken in preparing this publication, to the extent permitted by law, the State of Queensland accepts no responsibility and disclaims all liability (including without limitation, liability in negligence) for all expenses, losses (including direct and indirect loss), damages and costs incurred as a result of decisions or actions taken as a result of any data, information, statement or advice, expressed or implied, contained within. To the best of our knowledge, the content was correct at the time of publishing.



Interpreter and accessibility services

If you need an interpreter, call the Translating and Interpreting Service on **13 14 50** and have them contact Transport and Main Roads on **13 23 80**.

If you are deaf, hard of hearing or have difficulty speaking, contact us through the [National Relay Service](#):

- TTY users phone **13 36 77**, then ask for **13 23 80**.
- Speak-and-listen users phone **1300 555 727**, then ask for **13 23 80**.
- [Internet relay users](#) connect to the National Relay Service and then ask for **13 23 80**.

Project overview

The Centenary Bridge Upgrade in Jindalee proposes a new three-lane northbound bridge, rehabilitation of the existing bridges to three lanes southbound, plus opportunities for improved active transport.

This extra capacity will provide greater efficiency and travel-time reliability between Brisbane's CBD and the western suburbs, between local destinations, and along the entire Centenary Motorway.

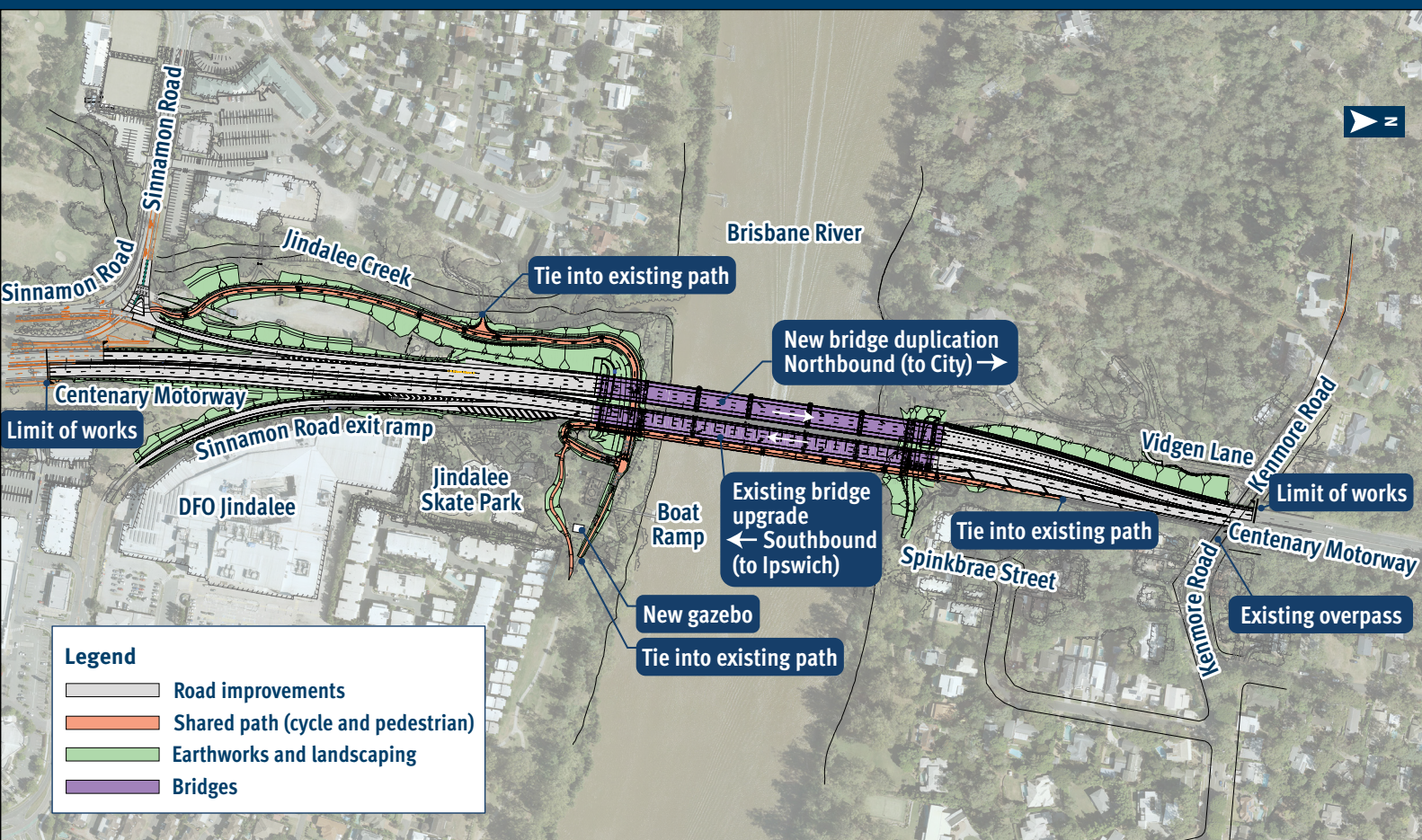
The planning study for the Centenary Motorway Upgrade identified possible staged upgrades along the Centenary Motorway from Sumners Road, Darra, to Frederick Street, Toowong. These staged upgrades aim to meet the region's future transport needs and include options focused on safety, improving travel-time reliability, and new active transport opportunities for pedestrians and people who ride bikes.

The Centenary Bridge is the first stage to progress from the planning study and carries more than 85,000 vehicles a day. Current traffic modelling shows that by 2036, around 152,000 vehicles per day will want to cross the bridge.

The upgrade offers the following benefits:

- improved safety to reduce the frequency and severity of crashes on the Centenary Bridge
- increased capacity to improve travel-time reliability and cater for current and future traffic needs
- improved active transport facilities
- longer and safer merge lanes for entry and exit ramps.

Main construction activities are expected to commence in 2023.



Community participation

The community consultation period opened 19 August 2021 and closed 19 September 2021. Health directives to prevent the spread of COVID-19 meant that planned community information sessions and face-to-face meetings could not be held.

Given the disruption to face-to-face sessions, the project team continued to collate feedback throughout the remainder of September and October 2021, including any additional incoming submission up to and including 20 October 2021 in this analysis.

Community feedback was received through emails, phone calls, at meetings, via elected representatives offices and letters.



199 emails



Elected Representatives (Federal, State and Local)



23 phone calls



2 letters



4 meetings

Consultation feedback summary

The project team received 232 pieces of feedback during the consultation period from 201 unique stakeholders. Some stakeholders emailed, called or contacted local Electorate Offices and TMR to submit multiple pieces of feedback.

Nine stakeholders fully supported the project, 59 did not support it, 113 stakeholders were happy the project was going ahead but would have preferred a larger scope to include upgrading the motorway as well, while 20 remained neutral.

The concerns and issues raised, and questions asked were reflected in the written feedback with the most frequently mentioned topics:

- Needs to include more – not literally just the bridge.
- The whole Centenary Motorway needs upgrading – what is the plan if this is stage 1?
- This does not help congestion at all.
- You are simply moving the bottleneck across the river – waste of money vs advertised benefit.
- Construction impacts on the local community – why can't the project include more, not just the bridge?
- Public transport – why are we not looking at light rail, bus lanes, additional city cats/ferries. Less cars on the road (including why not use the Kenmore Bypass land for light rail/active transport corridor).
- Active transport – needs to address more than just the bridge.
- Noise barriers – why are these not included?

As a result of additional questions being asked during consultation, the frequently asked questions document has been updated, published on the project webpage and shared with participants.



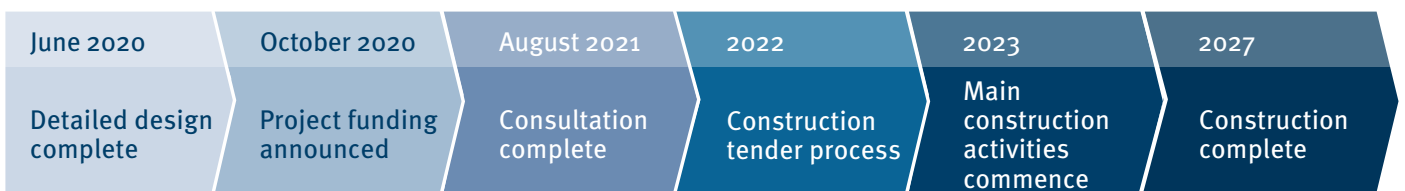
Artist's impression of Centenary Bridge.

Next steps

The project team has considered the feedback provided through the consultation. Responses to this feedback have been included in the frequently asked questions section on the web page and has been shared with consultation participants.

Construction timings and impacts will be determined once a construction contract has been awarded. TMR will continue to work closely with key stakeholders, including impacted local businesses, residents and community interest groups as the project progresses.

Timeline (indicative only, subject to change)



Stay informed

To stay informed about the Centenary Bridge project you can visit the project web page at tmr.qld.gov.au and search 'Centenary Bridge', join the project email list by emailing the project team at metropolitanregion@tmr.qld.gov.au or call **3066 4338** during business hours.