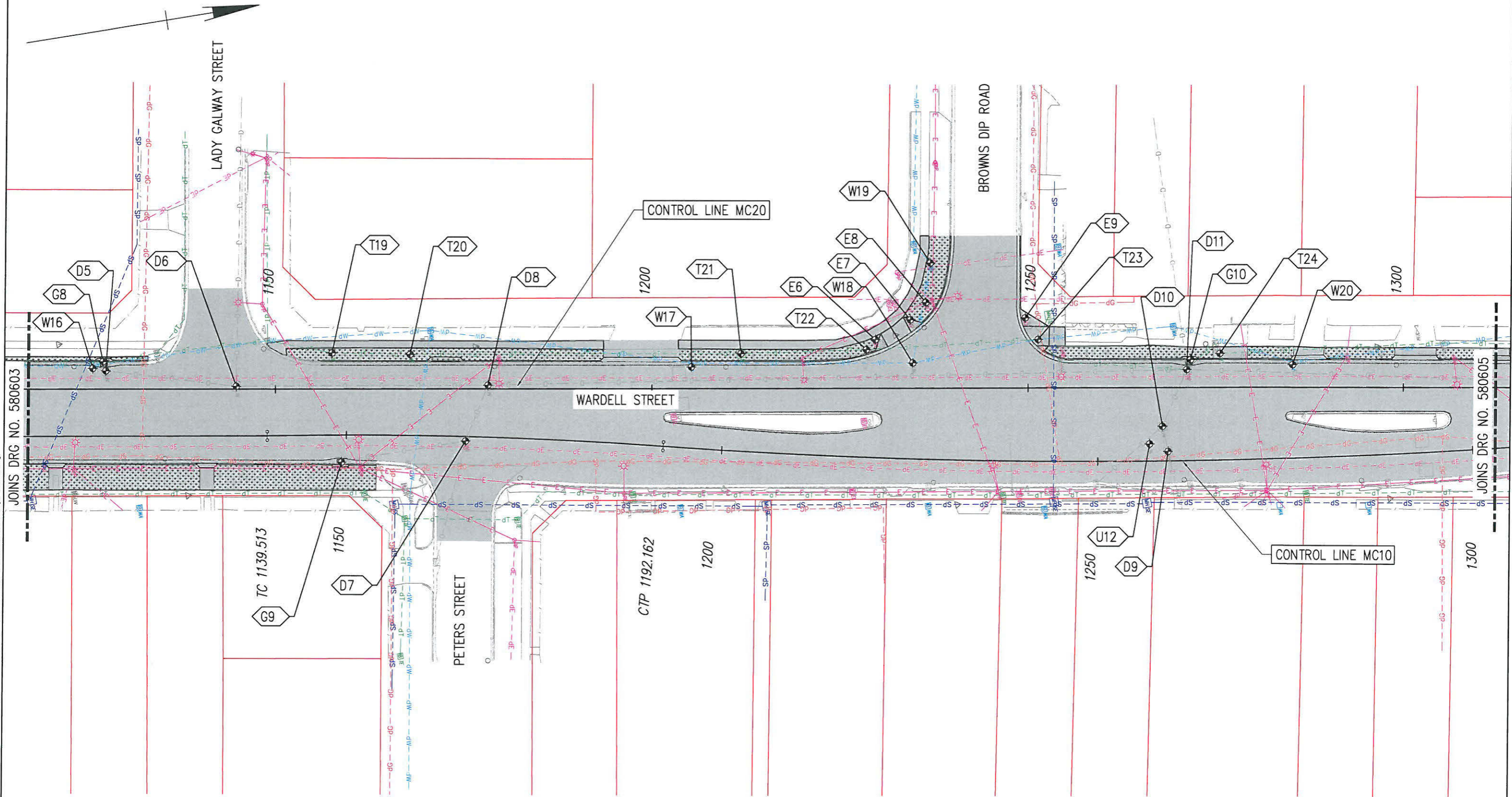


NOT FOR CONSTRUCTION
30 November 2011

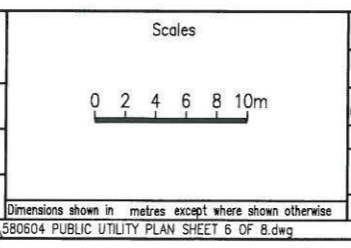


Refer Drg. No. 580599 For Service Detail Information

FOR TENDER

Associated Job Nos	
Auxiliary Drg Nos	
Original Issue A3	
Revisions/Descriptions	Ref Certification Date Microfiled

SURVEY DATA	
Horiz. Grid	BCSG
Height Origin	AHDD
Survey Books	MR91566



BRISBANE CITY COUNCIL WESTERN ARTERIAL ROAD (U18B) CTL CHGE 12.60KM TO 14.46KM				
Reference Points				
Preceding RP	Dist. to start of job (km)	From start to end of job	From end to Following RP	Following RP
6	0.90	1.49	0.46	8
Through Chainage from U18A				

Drawn	M.Smith
Checked	J. Hardy
Designed	S.Hodgkinson
Verified	J.Hardy
Design Reviews (RPEQ)	
S. Goger No. 9721	Date: 11/11

ASPHALT OVERLAY AND KERB WORKS PUBLIC UTILITY PLANT LAYOUT SHEET 6 OF 8				
ENGINEERING CERTIFICATION (RPEQ)				
ENG. AREA	NAME	SIGNATURE	NO.	DATE
Civil	M.Dykman		7189	11/11
For scheme approval status refer Drg. No. 580583 (1 of 54)				

Queensland Government	
Transport and Main Roads	
Job No.	140/U18B/808
Contract No.	METD-2224
Drawing No.	580604 A
Series Number	22 of 54
MRR_Detail_Con (02/11)	

Last Modified: Nov 30, 2011 3:11pm XREFS: X:\DROA_CL_250.dwg; X:\VIEWPORTS.dwg; X:\S_1000.dwg; X:\PIP_LABELS.dwg; X:\DROA_GA_HATCH.dwg; X:\DROA.dwg

CORNER OF WARDELL AND PETERS STREET



2016 - AFTER the TMR new kerb is installed



**2009 - BEFORE the TMR new kerb is installed
No existing outlet on to Wardell Street**